



7261

Service Guide

Cord Reel with RV Plug



670872

Alemite, LLC
167 Rowland Drive
Johnson City, TN 37601
www.alemite.com

SER 7261
Revision (6-05)

Copyright 2005 by Alemite, LLC

This document contains confidential information that is the property of Alemite, LLC and is not to be copied, used, or disclosed to others without express written permission.



IMPORTANT

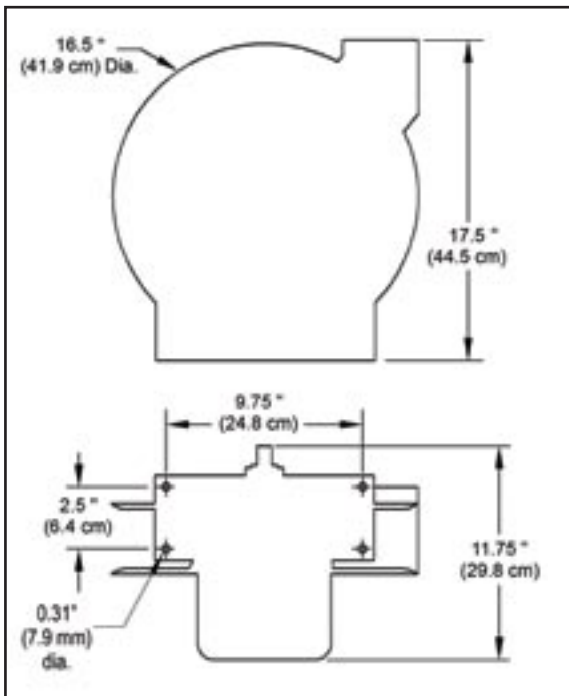
READ THIS MANUAL CAREFULLY BEFORE INSTALLING,
OPERATING, OR SERVICING THIS EQUIPMENT

ELECTRICAL INFORMATION

CORD APPARATUS	VOLTAGE A/C	AMPS
RV Plug	120	35

Frequency 60HZ single phase

DIMENSIONAL DATA



Four 5/16" (7.9 mm) diameter mounting holes

Fig. 1

PERSONNEL SAFETY

Personal injury and/or equipment damage may result if proper safety precautions are not observed.

- Ensure that only a qualified electrician installs/services this equipment.
- Ensure that power supply voltage does not exceed maximum voltage rating of reel.
- Ensure that reel is properly installed before connecting to power supply.
- Ensure that all electrical power is removed from reel before servicing.
- A high-tension spring assembly is contained within the reel. Exercise extreme caution.
- Check for frayed and/or broken wires before each use. Pull electrical cord from reel by grasping the electrical cord itself, not the work device.
- If an electrical malfunction should occur, remove power from reel immediately.
- Ensure that reel, electrical cord, and equipment being serviced are properly grounded. Use an ohmmeter to check ground continuity.
- If reel ceases to unwind or rewind, remove power immediately. Do not pull or jerk on electrical cord!
- Treat and respect the reel as any other piece of machinery, observing all common safety practices.

WARNING:

Even low voltage can cause irreparable damage or death! Exercise extreme caution while operating or servicing this equipment.

INSTALLATION INSTRUCTIONS

MOUNTING (FIG. 2)

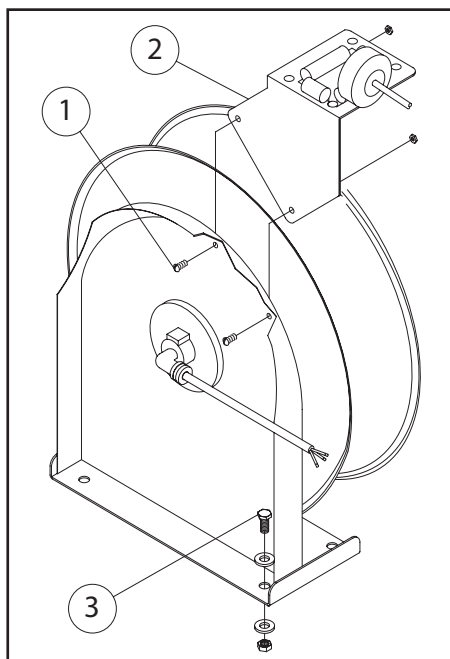


Fig. 2

CAUTION:

Maximum installation height is 16 feet (4.9 m). Do not exceed this distance.

Ensure that only a qualified electrician installs/serves this equipment.

1. Unpack and inspect reel for damage. Turn by hand to check for smooth operation. Check for completeness.
2. Configure reel for top, side or bottom-wind (bottom-wind for constant tension reels only) electrical cord dispensing by removing bolts (1) securing guide arm bracket (2). Determine new guide arm location and remove corresponding bolts. Position guide arm bracket to reel and replace bolts.
3. Position reel on floor, wall, or ceiling. Secure into place, using four (customer supplied) screws or bolts (3).

ELECTRICAL

WARNING:

Ensure that application does not exceed electrical rating of reel.

Observe applicable NEC, OSHA, and local electrical codes when installing this equipment.

1. Connect input cord to proper electric supply.

ADJUSTMENTS

SPRING TENSION

If necessary, adjust spring tension on reel by adding or removing wraps of electrical cord from spool, one wrap at a time, until desired tension is obtained. Add wraps to increase tension. Remove wraps to decrease tension.

WARNING:

When adding wraps of electrical cord, be careful not to exceed the winding mechanism's spring capacity. Add just enough wraps of cord to achieve the desired tension. Damage to the winding mechanism will result if spring is over-tightened.

Always be aware of spring tension on reel. Exercise extreme caution.

TROUBLESHOOTING INSTRUCTIONS

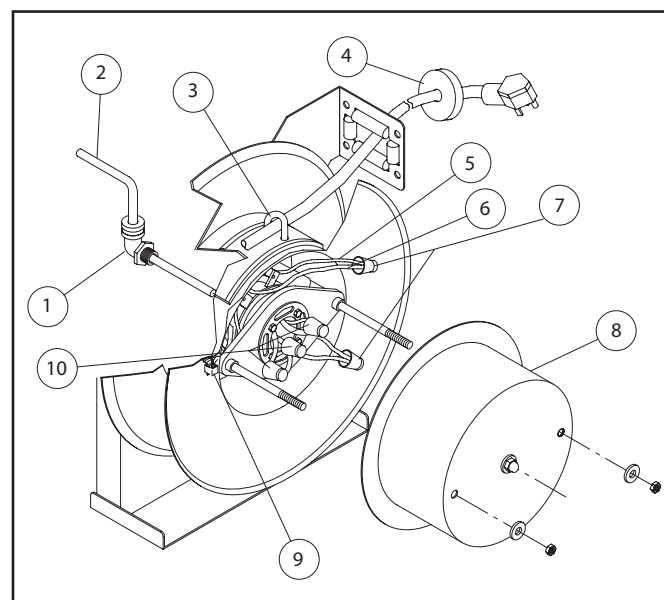


Fig. 3

Troubleshooting of the reel consists of isolating a problem to a defective electrical cord/work device, brush holder/brushes, or collector assembly. Refer any other discrepancies only to an authorized service person or directly to Alemite.

WARNING:

The following procedure directs the technician to take voltage measurements.

Remember, even low voltage is dangerous and can cause personal injury or death. Exercise extreme caution!

Ensure that only a qualified electrician installs/serves this equipment.

See Fig. 3

1. Remove power from reel.
2. Remove access cover (8) from reel.
3. Remove three wire nuts (10) securing input electrical cable wires to collector ring assembly wires. Ensure that bare wires do not contact each other or the reel superstructure.
4. Apply power to reel.
5. Using a voltmeter, check voltage between black wire (hot) and white wire (neutral). If voltage reading is correct (120 vac), proceed to step 6. If voltage reading is incorrect, replace input electrical cable (refer to SERVICE INSTRUCTIONS).
6. Remove power from reel
7. Using an ohmmeter, check continuity of output electrical cord. If cord checks good, replace reel. If cord is faulty, replace cord (refer to SERVICE INSTRUCTIONS).
8. Replace access cover (8).

SERVICE INSTRUCTIONS

WARNING:

Remove power from reel before performing any of the following procedures.

REPLACING THE INPUT ELECTRICAL CABLE

See Fig. 3

WARNING:

Use only 10/3 cable.

1. Remove access cover (8) from reel.
2. Remove three wire nuts (10) connecting input electrical wires (2) to collector ring ass'y wires.
3. Unscrew elbow (1) from reel & pull out input cable from main shaft & elbow.
4. Feed input wires (2) through elbow (1) and main shaft.
5. Screw elbow (1) into reel.
6. Connect input wires (2) and collector ring wires together using wire nuts (10).
7. Assemble cover (8) to reel.

REPLACING THE OUTPUT ELECTRICAL CORD

See Fig. 3

WARNING:

Use extreme caution, reel under tension. Avoid releasing latch mechanism.

Use only 10/3 cable.

1. Pull output electrical cable from reel until cable is fully extended, then latch.
2. Remove access cover (8).
3. Remove two wire nuts (7) securing output electrical cable wires (5) to collector assembly brush wires (6).
4. Remove output electrical cable ground wire from ground lug (9).
5. Loosen U-clamp (3).
6. Remove output electrical cable.
7. Remove cable bumper (4).
8. Remove 6" of output electrical cable outer jacket.
9. Route cable through guide arm and U-clamp (3) then through cut-out in spool.
10. Tighten U-clamp (3).
11. Using wire nuts (7), connect output electrical cable wires (5) to collector assembly brush wires (6) as indicated in illustration.
12. Connect ground wire of output electrical cable to ground lug (9).
13. Using an ohmmeter, check for ground faults.
14. Replace access cover (8).
15. Release latch and wind output electrical cable onto reel.
16. Install cable bumper (4).

REPLACEMENT PARTS

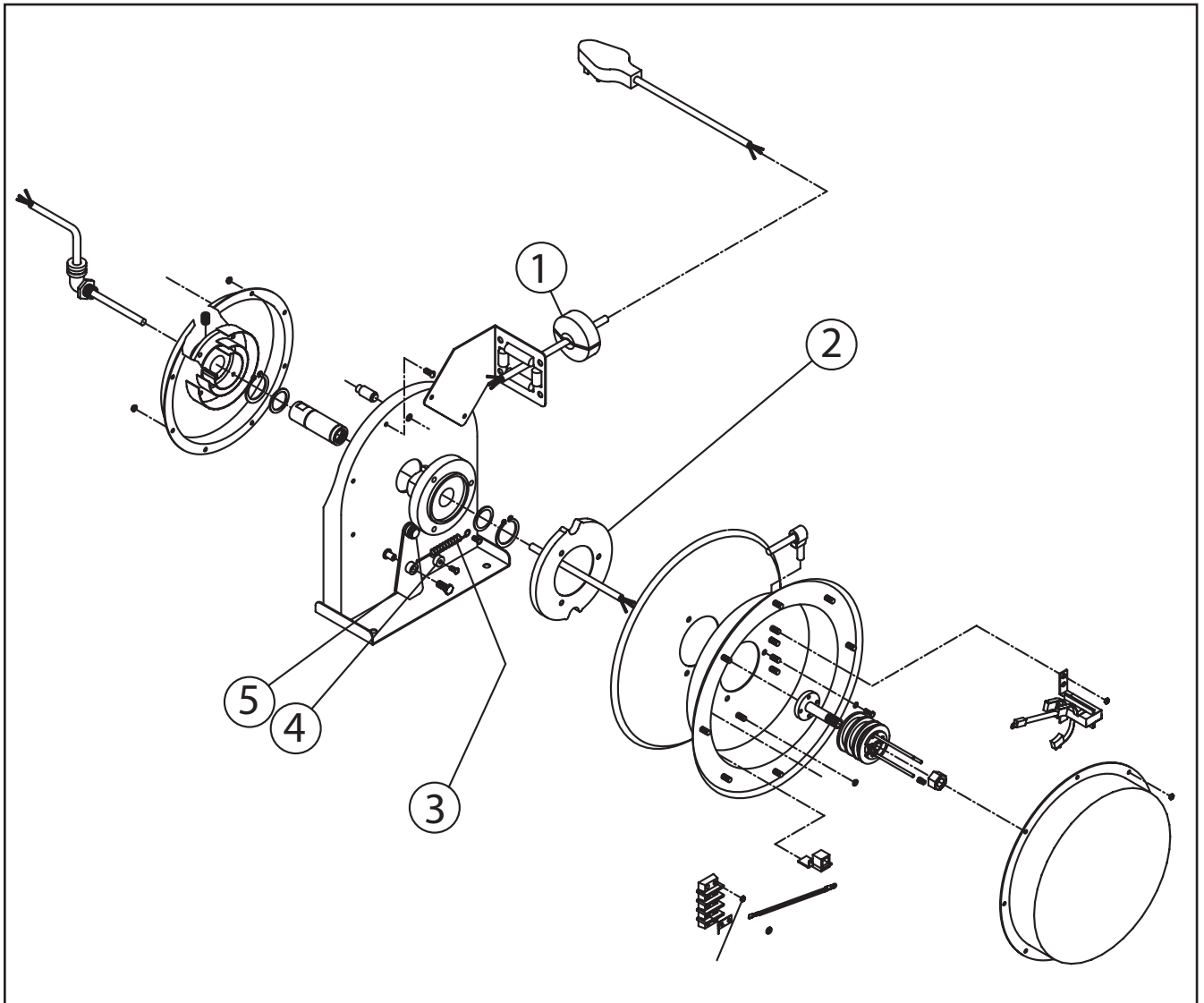


Fig. 4

Item No.	Description	Part No.
1	Bumper Ass'y	393539-113
2	Cam, Latch	393539-114
3	Spring, Latch Plate	393539-110
4	Latch Bumper	393539-111
5	Latch Plate Ass'y	393539-112