

Dispensing Valve

Description

IMPORTANT: The maximum pressure of the pump used with these valves cannot exceed 500 psi (34.5 Bars).

Dispensing Valves model 7480-1 and 7481-1 are designed to dispense fluid lubricants.

Pump Model

Valve Model 7480-1 connects directly to the outlet of the pump.

Oil Bar Model

Valve Model 7481-1 is designed to attach to an oil bar.

Operation

Move the ball and handle assembly either in an upward or downward direction.

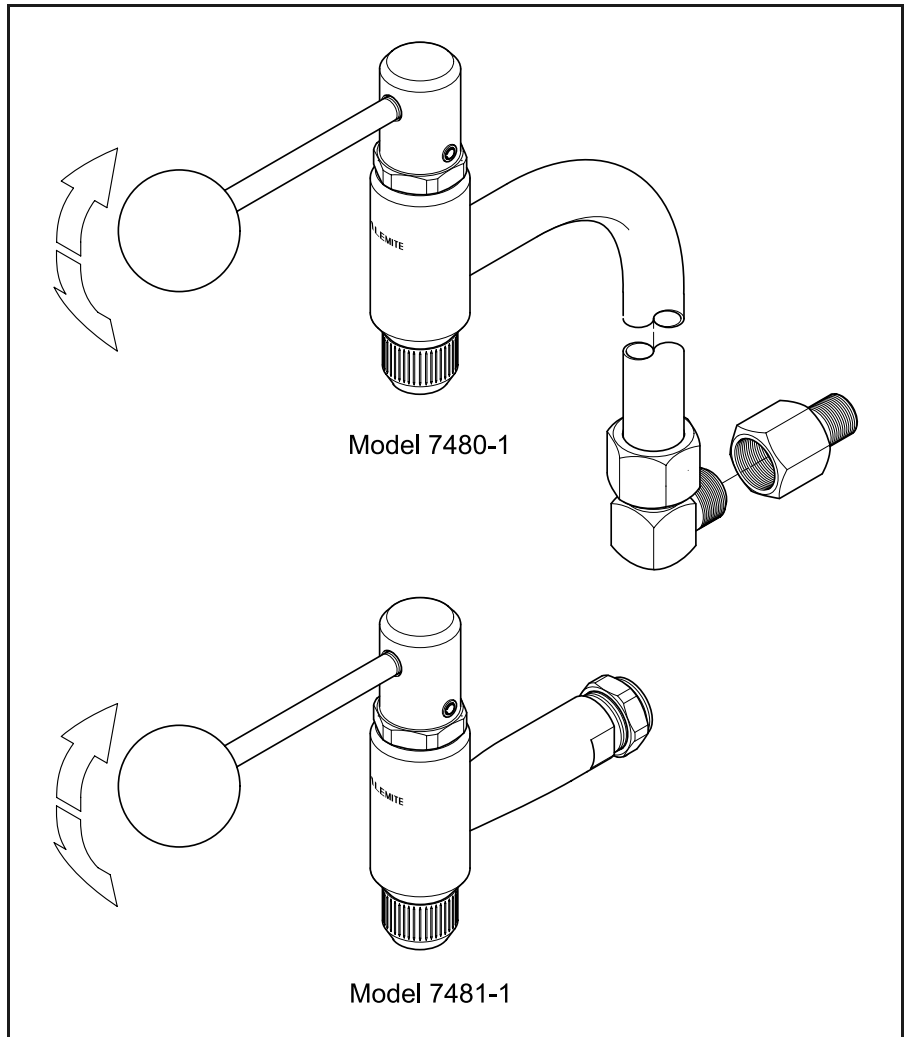


Figure 1 Dispensing Valve Model 7480-1 and 7481-1

Specifications

Model	Fluid Inlet	Maximum Pressure	
		psi	Bars
7480-1	3/4 " NPTF (m)	500	34.5
7481-1			

Table 1 Dispensing Valve Specifications

Alemite Corporation
PO Box 473515, Charlotte, North Carolina 28247-3515
www.alemite.com

Copyright © 2000 by Alemite Corporation

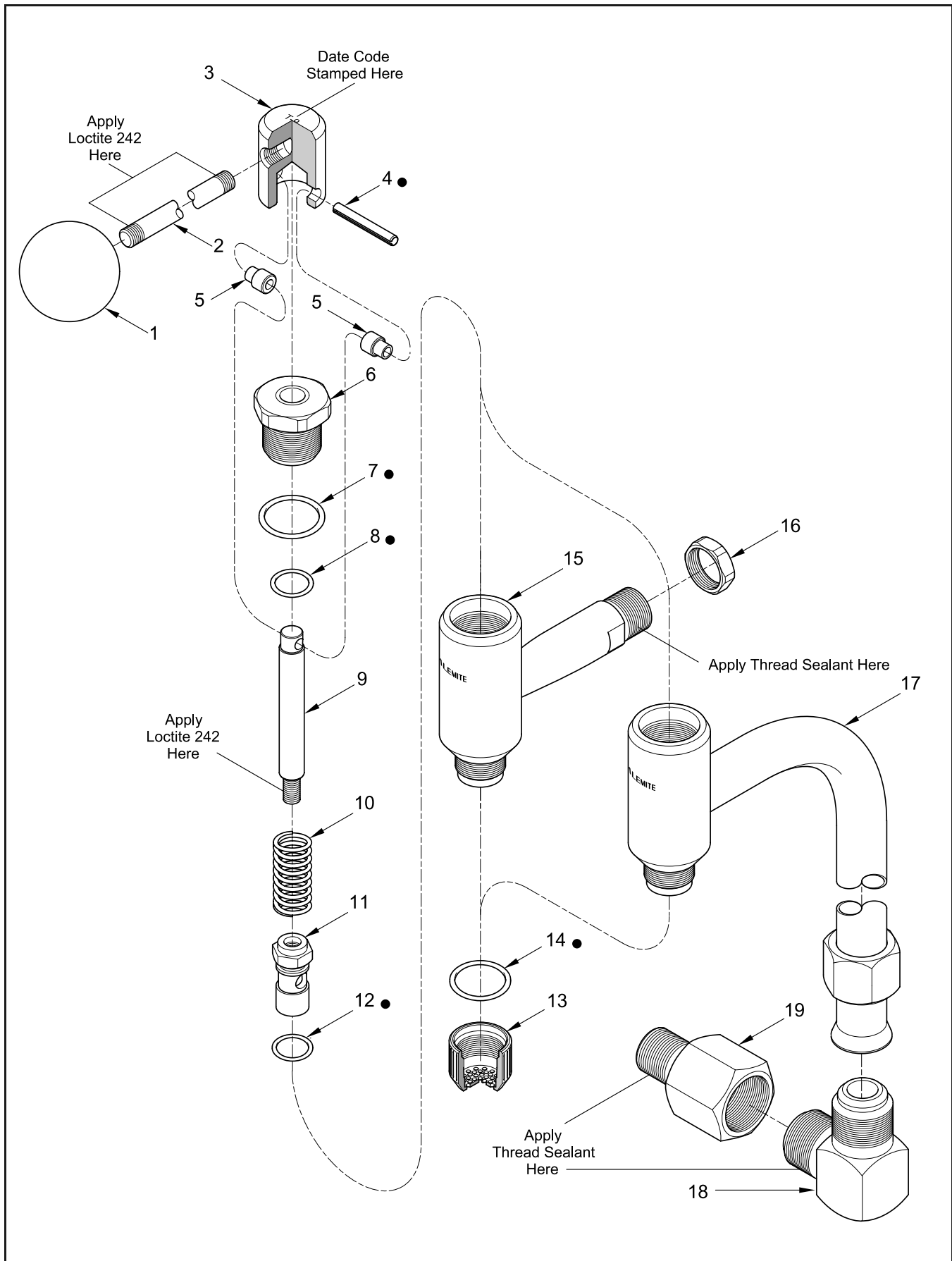


Figure 2 Dispensing Valve Model 7480-1 and 7481-1 - Exploded View

Item No.	Part No.	Description	Qty	Notes	Numeric Order Part # (Item #)
1	338605	Knob, Ball	1		SWA 285 (16)
2	338604	Handle, Valve	1		130659 (19)
3		Cap, Valve	1		X171000-8 (8)
4		Pin, Roll, 5/32 " Dia. x 1.00 " Long	1	●	X171000-13 (7)
5	338606	Spacer, Stem	2		X171001-7 (12)
6	338603	Guide, Valve Stem	1		X171009-5 (14)
7	X171000-13	O-Ring, 11/16 " ID x 7/8 " OD	1	●	Pack of 10 <i>171034-9</i> (4)
8	X171000-8	O-Ring, 3/8 " ID x 9/16 " OD	1	●	Pack of 10 <i>338600</i> (3)
9	338608	Stem, Valve	1		338601 (11)
10	338607	Spring	1		338603 (6)
11	338601	Tip, Valve	1		338604 (2)
12	X171001-7	O-Ring, 3/8 " ID x 1/2 " OD	1	●	Pack of 10 338605 (1)
13	338782	Screen	1		338606 (5)
14	X171009-5	O-Ring, 11/16 " ID x 13/18 " OD	1	●	Pack of 10 338607 (10)
15		Body and Extension Assembly	1		338608 (9)
16	SWA 285	Nut, Lock, 3/4 " -14	1		Model 7481-1 338782 (13)
17		Body and Tube Assembly	1		338783 (17)
18		Elbow, 3/4 " Tube x 3/4 " NPTF (m)	1		Model 7480-1 338784 (15)
19	130659	Adapter, 3/4 " NPTF (f) x 1/2 " NPTF (m)	1		338945 (18)

Legend:

- Part numbers left blank (or in *italics*) are not available separately
- designates a repair kit item

Repair Kit

Part No.	Kit Symbol	Description
393625	●	Kit, Repair

Overhaul

Prior to performing any maintenance procedure, the following safety precautions must be observed. Personal injury can occur.



WARNING

Do not use halogenated hydrocarbon solvents such as methylene chloride or 1,1,1 trichloroethane in this valve assembly. An explosion can result within an enclosed device capable of containing pressure when aluminum and/or zinc-plated parts come in contact with halogenated hydrocarbon solvents.

Release all pressure within the system prior to performing any overhaul procedure.

- Disconnect the air supply line from the pump motor.
- Into an appropriate container, operate the dispensing valve to discharge remaining pressure within the system.

Never place a hand or any other part of the anatomy within the flow path of the valve. Personal injury can occur.

Read each step of the instructions carefully. Make sure a proper understanding is achieved before proceeding.

Disassembly

NOTE: Refer to **Figure 2** for component identification on all overhaul procedures.

1. Secure the Body portion of the assembly in a soft-jaw vice.

Model Dependent Step

2. Unscrew Valve Stem Guide (6) [with attached components] from Body and Extension Assembly (15) [model 7480-1].

Unscrew Valve Stem Guide (6) [with attached components] from Body and Tube Assembly (17) [model 7481-1].



WARNING

Use care during the removal of Valve Tip (11). Spring (10) is under compression. Personal injury can occur.

3. Unscrew Valve Tip (11) from Valve Stem (9).
4. Remove O-Ring (12) from the Valve Tip.
5. Remove Spring (10) and Valve Stem Guide (6) from the Valve Stem.
6. Remove O-Rings (7 and 8) from the Valve Stem Guide.
7. Remove Roll Pin (4) that secures the Valve Stem to Stem Spacers (5).
 - Use a drift and a small hammer.
8. Remove Valve Cap (3) from the Valve Stem.
9. Remove the Stem Spacers from the Valve Cap.
10. Unscrew Screen (13) from the Body portion of the assembly.
11. Remove O-Ring (14) from the Body.

Clean and Inspect

1. Clean all metal parts in cleaning solvent. The solvent should be environmentally safe.
2. Inspect all parts for wear and/or damage.
 - Replace as necessary.
3. Closely inspect the mating surfaces of all components for any imperfections. Ensure a smooth and clean contact is obtained when assembled.

Assembly

NOTE: Prior to assembly, certain components require lubrication in clean oil. Refer to **Table 2** for details.

Refer to **Figure 3** for a section view of the valve assembly.

1. Install and seat Stem Spacers (5) [small diameter first] into Valve Cap (3).
2. Install Valve Stem (9) [hole end] into the Valve Cap.
 - Make sure the Pin holes are in alignment.
3. Install Roll Pin (4) into the Stem Spacer, Valve Stem, and additional Stem Spacer.
 - Use a drift and a small hammer.
4. Install O-Ring (7) onto Valve Stem Guide (6).
 - Install O-Ring (8) into the Valve Stem Guide.
5. Install and seat the Valve Stem Guide [hex end first] and Spring (10) onto the Valve Stem.

IMPORTANT: Compress the Spring during the installation of Valve Tip (11).
6. Screw Valve Tip (11) [with Loctite 242] onto the Valve Stem.
 - Tighten the Valve Tip securely.
7. Install O-Ring (12) onto the Valve Tip.
8. Secure the Body portion of the assembly in a soft-jaw vice.

9. Screw the Valve Stem Guide assembly into the Body portion of the valve.
 - Tighten the assembly securely.
10. Install O-Ring (14) onto the Body portion of the valve assembly.
11. Screw Screen (13) onto the Body.
 - Tighten the Screen securely.

Item No.	Description
7	O-Ring, 11/16 " ID x 7/8 " OD
8	O-Ring, 3/8 " ID x 9/16 " OD
12	O-Ring, 3/8 " ID x 1/2 " OD
14	O-Ring, 11/16 " ID x 13/18 " OD

Table 2 Lubricated Components

Changes Since Last Printing
Added Adapter 130659

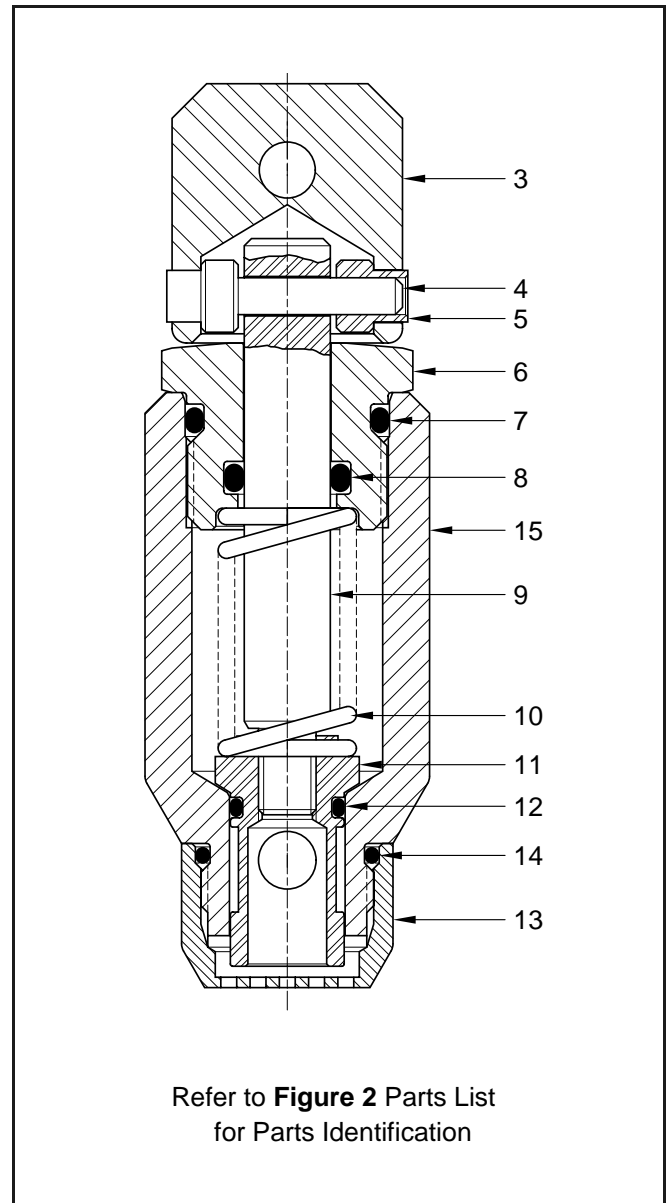


Figure 3 Dispensing Valve - Section View

