

High-Pressure Grease Pump

Description

The major components of these high-pressure pump models consist of a(n):

- reciprocating air motor
- double-acting pump tube
- cover and follower plate

Pump Assembly

Each high-pressure (50:1 ratio) pump is designed to deliver a range of greases [up to NLGI # 3] and operate directly from their original 120-pound container.

Models 8550-A1 and 8551-5

The difference between these models is the extent of accessory items included. See **Figure 1**.

Pump model 8551-5 is obsolete, although service parts and repair kits are available.

Pump model 8550-A1 is current.

Specifications

IMPORTANT: For detailed information on the pump tube (including specifications and performance data) refer to SER 331380-A5

For information on the motor, please refer to SER 324300-5

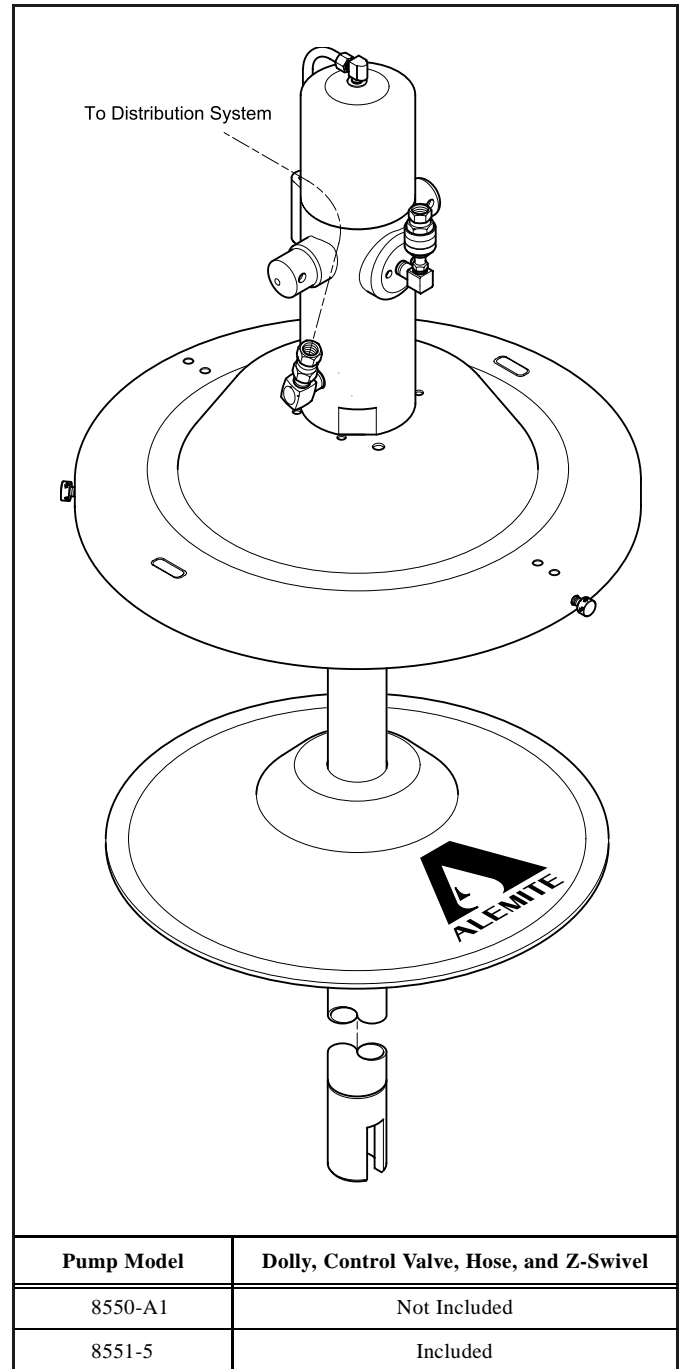


Figure 1 High-Pressure Pump Model 8550-A1

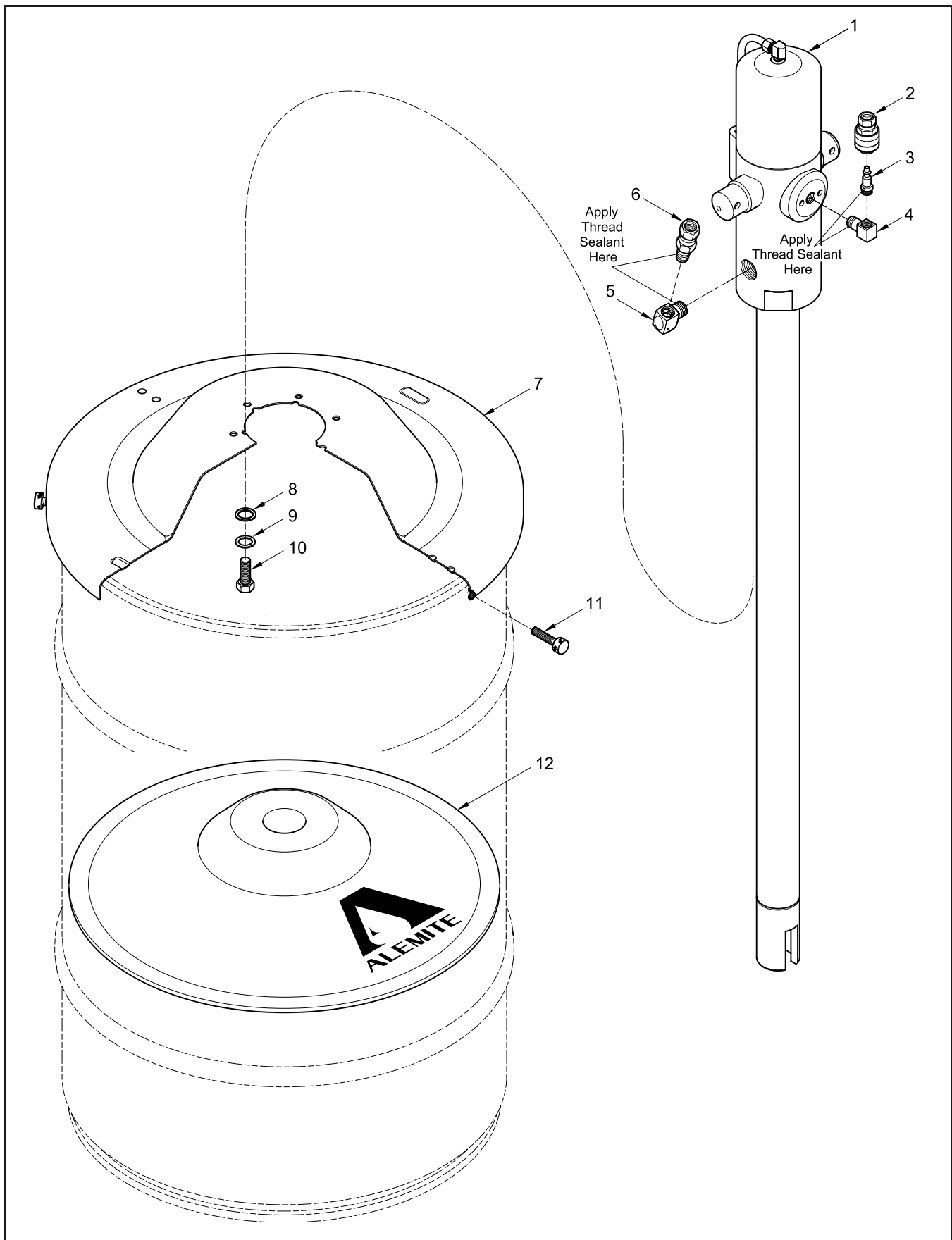


Figure 2 High-Pressure Grease Pump Model 8550-A1 - Exploded View

Item No.	Part No.	Description	Qty	Notes	Numeric Order Part # (Item #)
1	331380-A5	Pump Assembly, High-Pressure	1	See SER 331380-A5	1001-66 (6)
2	328030	Coupler, Air, 1/4 " NPTF (f)	1		<i>17804</i> (8)
3	328034	Connector, Air, 1/4 " NPTF (m)	1		43748 (4)
4	43748	Body, Angle, 1/4 " NPTF (m) and (f)	1		48018 (11)
5	315669	Adapter, 3/8 " NPTF (m)	1		<i>77786</i> (10)
6	1001-66	Adapter, Union, 90 °, 3/8 " NPTF	1		<i>172207-1</i> (9)
7	338371	Cover Assembly	1	Includes items 8-11	315669 (5)
8		Washer, 1/4 "	3		328030 (2)
9		Washer, Lock, 1/4 "	3		328034 (3)
10		Screw, Cap, 1/4 " -20 x 1/2"	3		331380-A5 (1)
11	48018	Screw, Thumb, 1/4 " -28 x 1-1/8 "	3		338371 (7)
12	338802	Plate, Follower	1		338802 (12)

Legend:
Part numbers left blank (or in *italics*) are not available separately

Assembly

NOTE: Refer to **Figure 2** for component identification on all assembly procedures.

CAUTION

Select a clean environment for all assembly procedures. Prevent contamination from foreign material. Damage to components can occur.

IMPORTANT: Make sure to remove the protective cover from the inlet of Pump Assembly (1).

Do not apply thread sealant to the first two (2) threads of any connection. Contamination can occur.

- Screw Union Adapter (6) [with thread sealant] into Adapter (5) as required.
 - Tighten the Union Adapter securely.
- Install Pump Assembly (1) into Cover (7).
- Secure the Pump Assembly to the Cover with Washers (8), Lock Washers (9), and Cap Screws (10).
 - Tighten the Capscrews securely.

- Place Follower Plate (12) onto the top of the product.
 - With a wobbling motion, eliminate any air that may be trapped underneath the Follower Plate. Force the product through the hole in the center of the Plate.
- Guide the pump tube into the Follower Plate and fit the Cover onto the container.
- Secure the Cover to the container with Thumb Screws (11).
- Test/Prime the Pump assembly.
 - Refer to Service Guide SER **331380-A5** for details.

Changes Since Last Printing

New Format

