



High-Pressure Portable Pump

Description

The major components of the high-pressure portable pump assembly in the 9611 model series consist of a(n):

- air-operated motor
- single-acting reciprocating pump tube
- control valve assembly, z-swivel, and delivery hose
- cover assembly
- container with two-wheel hand cart (Model 9611-A)
- container with handles (Model 9611-B)

Pump Assembly

The high-pressure (50:1 ratio) pump included with the assembly is designed to deliver a range of greases [up to NLGI # 3] directly from the 70-pound (31.8 kg) container. *

Models 9611-A and 9611-B

Model 9611-A includes a two-wheel hand cart that automatically levels the container. Carrying handles are included on model 9611-B. See table in **Figure 1**.

NOTE: The follower plate is not included with these models. See **Table 2**.

Specifications

Air Motor

Piston Diameter x Stroke		Air Inlet	Maximum Air Pressure	
Inches	Centimeters		psi	Bars
2-15/16 x 3	7.5 x 7.6	1/4 " NPTF (f)	150	10.3

For details on the air motor, refer to Service Guide SER 338066-A1

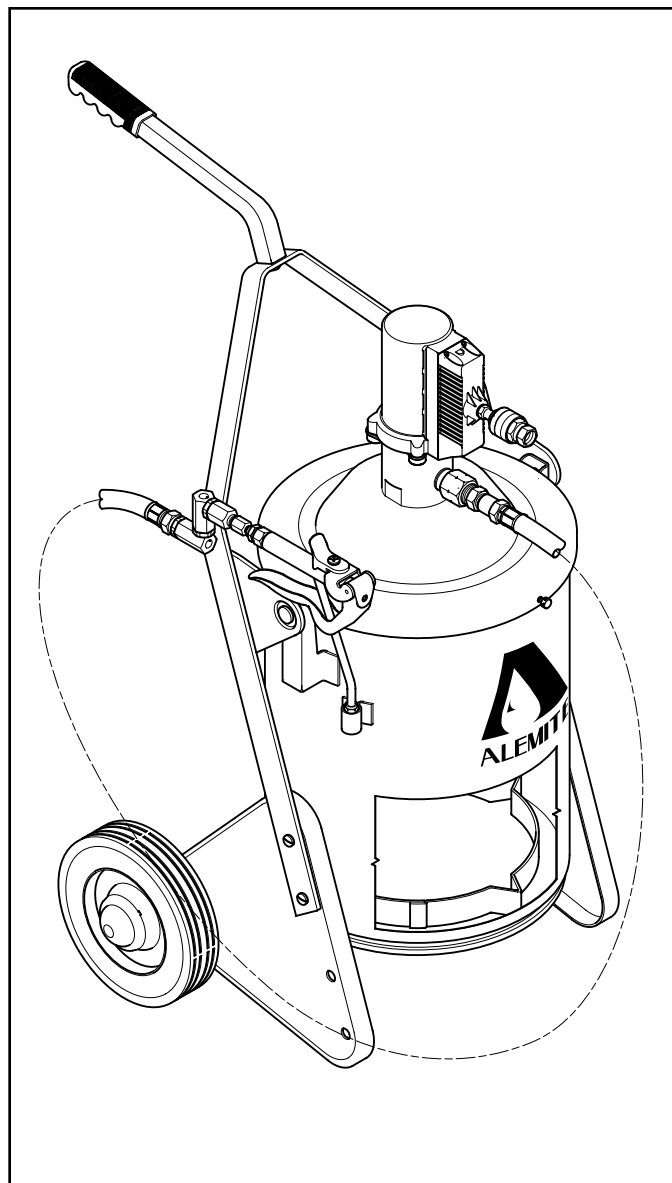
Pump Tube

Material Outlet	Max. Material Pressure		Delivery/Minute (Approximate)*		Displacement per Cycle	
	psi	Bars	Pounds	Kilograms	In ³	Cm ³
3/8 " NPTF	7500	517	3	1.4	0.39	6.39

* For detailed information, refer to Service Guide SER 9611/9650

Table 1 High-Pressure Portable Pump Specifications

* Product can also be dispensed directly from original 35-pound containers with the use of a spacer ring.



Pump Model	Container	Model Weight		Width x Height	
		lbs	kg	Inches	Cm
9611-A	w/ hand cart	46	20.9	23 x 40-1/2	58.4 x 103
9611-B	w/ handles	36	16.4	19-1/4 x 27	48.9 x 68.6

Figure 1 High-Pressure Portable Pump Models 9611-A and 9611-B - Model 9611-A Shown

Alemite Corporation
PO Box 473515, Charlotte, North Carolina 28247-3515

Copyright © 1997 by Alemite Corporation

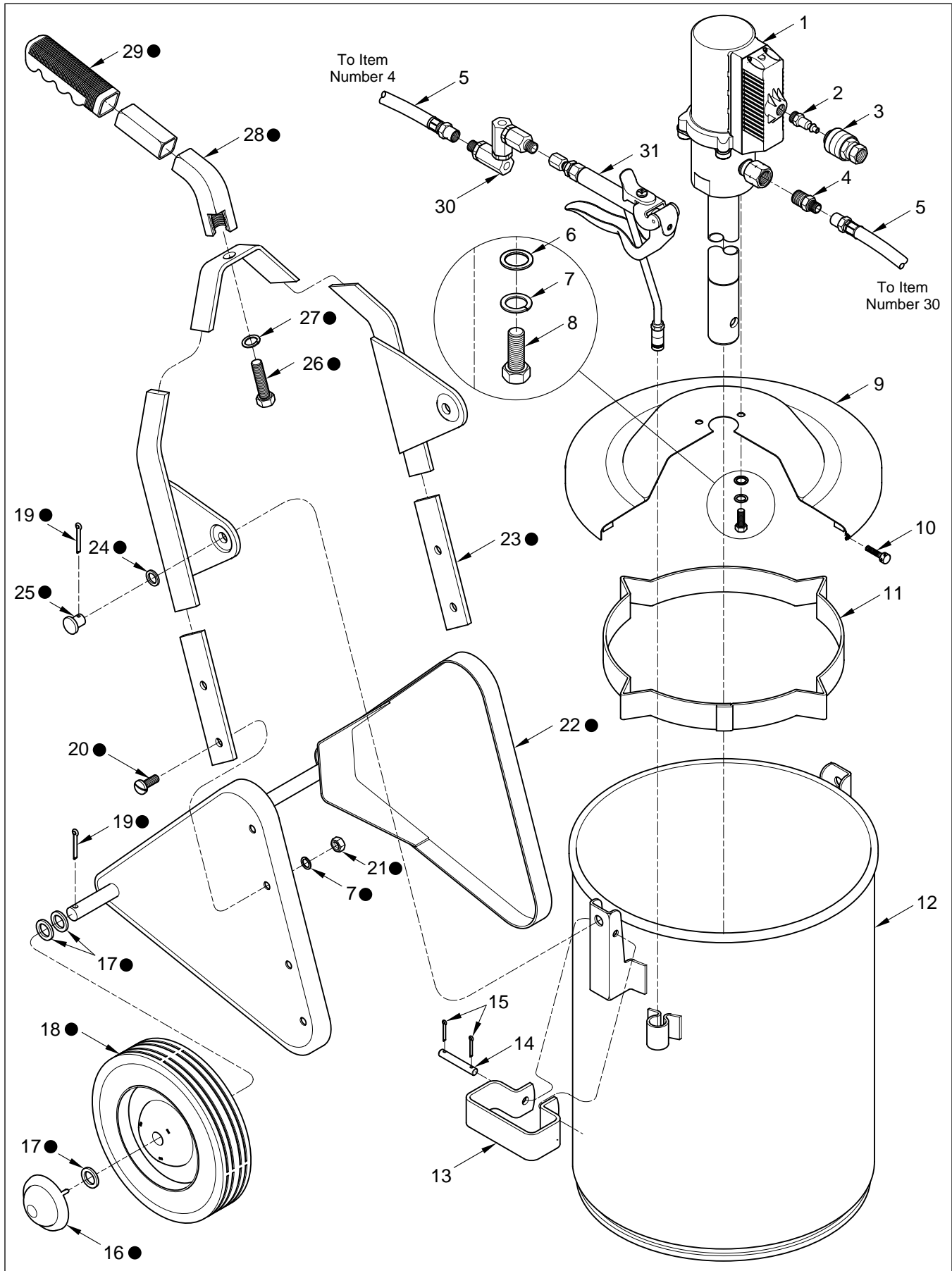


Figure 2 High-Pressure Portable Pump Models 9611-A and 9611-B - Exploded View

Item No.	Part No.	Description	Qty	Notes		Numeric Order Part # (Item #)	
1	338043-J1	Pump Assembly, High-Pressure	1		See SER 9611/9650	17804	(6)
2	328034	Connector, 1/4 " NPTF (m)	1			6320-3	(31)
3	328030	Coupler, Air, 1/4 " NPTF (f)	1			44734	(4)
4	44734	Adapter, 1/2 " -27 x 3/8 " NPTF (m)	1			48018	(10)
5	317875-7	Hose Assembly, Material	1			B52752	(14)
6	17804	Washer, 1/4 "	3			77450-2	(24)
7	172207-1	Washer, Lock, 1/4 "	7	●	Qty of 4 in Kit	77650	(21)
8	77786	Capscrew, 1/4 " -20 x 1/2 "	3			77786	(8)
9	323496-A4	Cover and Gasket Assembly	1			79713	(26)
10	48018	Screw, Thumb,	1			131209	(17)
11	317559	Ring, Spacer (for 35-pound container)	1			170347	(20)
12	338381	Container (70-pound [31.8 kg])	1			172207-1	(7)
13		Handle	2		Model 9611-B	172207-4	(27)
14		Pin,	2			172212-9	(15)
15		Pin, Cotter,	4			172212-16	(19)
16	324395	Cap, Hub	2	●	Model 9611-A	305376-2	(13)
17		Washer,	6	●		305377	(14)
18	337997	Wheel	2	●		317558-C4	(22)
19		Pin, Cotter, 1/8 " Dia. x 1 "	4	●		317559	(11)
20		Screw, 1/4 " -20 x 5/8 "	4	●		317595	(25)
21	77650	Nut, 1/4 " -20	4	●		317875-7	(5)
22		Frame Assembly	1	●		323496-A4	(9)
23	332901-B4	Fork Assembly	1	●		324395	(16)
24		Washer, 3/8 "	2	●		328030	(3)
25		Pin	2	●		328034	(2)
26		Bolt,	1	●		332901-B4	(23)
27		Washer, Lock	1	●		333001	(28)
28	333001	Handle Assembly	1	●		337997	(18)
29		Grip (Rubber)	1	●		338043-J1	(1)
30	B52752	Z-Swivel Assembly, High-Pressure	1		See Figure 3	338334	(29)
31	6320-3	Valve Assembly, High-Pressure Control	1		See SER 6320-3	338381	(12)

Legend:
Part numbers left blank (or in *italics*) are not available separately
● designates a repair kit item

Repair Kit

Part No.	Kit Symbol	Description
393629	●	Kit, Hand Cart

Assembly

NOTE: Refer to **Figure 2** for component identification on assembly procedures.

Hand Cart Assembly

1. Remove Bolt (26), Lock Washer (27) and Handle Assembly (28) from Fork Assembly (23) [as shipped].
2. Position the Handle Assembly on top of the Fork Assembly.
3. Screw the Bolt with Lock Washer into the Handle Assembly from the bottom of the Fork Assembly.
 - Tighten the Bolt securely.

Follower Plate (Not Included)

4. Loosen Thumb Screws (10) that secure Cover Assembly (9) to Container (12).
5. Remove the Cover and Pump Assembly from the Container.
6. Install the 35-pound container into Spacer Ring (11).

NOTE: When bulk filling Container (12), remove the Spacer Ring and fill the Container with product. Do not allow air to mix with the product during the filling process. Pump may lose prime.

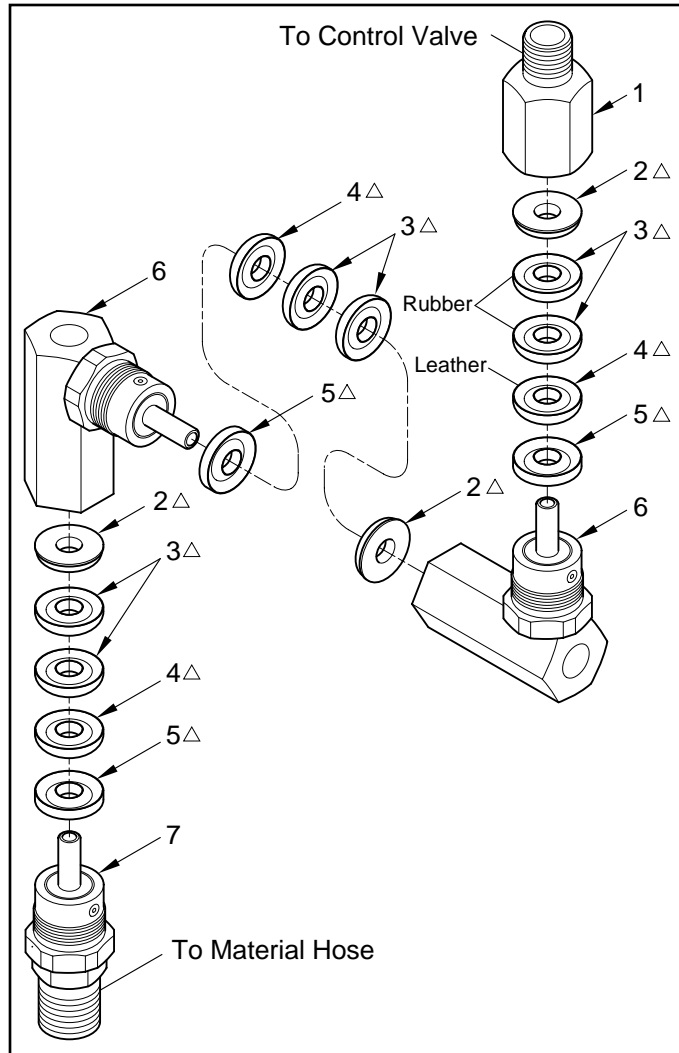
7. Place the follower plate onto the top of the product. See **Table 2**.
 - With a wobbling motion, eliminate any air that may be trapped underneath the follower plate. Force the product through the hole in the center of the plate.
8. Guide the pump tube into the follower plate and fit the Cover onto Container (12).
9. Secure the Cover to the Container with Thumb Screws (10).
10. Test/Prime the Pump assembly.
 - Refer to Service Guide SER 9611/9650 for details.

Accessories

Accessory items available for these pumps are listed in **Table 2**.

Part Number	Description
337665	Follower Plate (for 35-pound container)
338801	Follower Plate (for 70-pound container)

Table 2 High-Pressure Portable Pump Accessories



Item No.	Part No.	Description	Notes	Qty
1		Adapter, Swivel, 1/4 " NPTF (m)		1
2		Ring, Support, Male	Δ	3
3		V-Packing (Rubber)	Δ	6
4		V-Packing (Leather)	Δ	3
5		Ring, Support, Female	Δ	3
6		Body and Stud Assembly		2
7		Adapter, Swivel, 1/2 " -27		1

Legend:
 Part numbers left blank are not available separately
 Δ designates a repair kit item

Repair Kit

Part No.	Kit Symbol	Description
398719-1	Δ	Kit, Repair [Quantity for two (2) Z-Swivels]

Figure 3 High-Pressure Z-Swivel - Exploded View

Changes Since Last Printing
 Initial Release