



## High-Pressure Portable Pump

### Description

The major components of the high-pressure portable pump assembly in the 9611 model series consist of a(n):

- air-operated motor
- single-acting reciprocating pump tube
- control valve assembly, z-swivel, and delivery hose
- cover and handle assembly
- follower plate
- two-wheel hand truck (Model 9611-Z only)

### Pump Assembly

The high-pressure (50:1 ratio) pump included with the assembly is designed to deliver a range of greases [up to NLGI # 3] and operate directly from their original 35-pound container.

#### Models 9611-H and 9611-Z

Model 9611-Z includes a two-wheel hand truck to aid transport. See **Figure 1**.

### Specifications

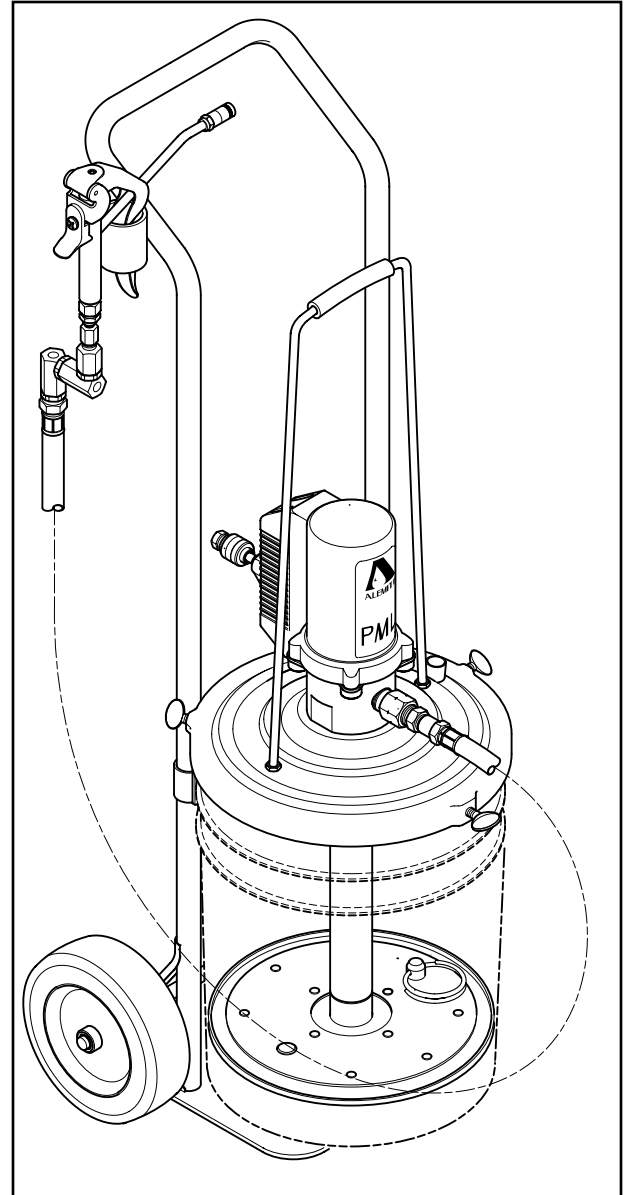
#### Air Motor

Piston Diameter x Stroke		Air Inlet	Maximum Air Pressure	
Inches	Centimeters		psi	Bars
2-15/16 x 3	7.5 x 7.6	1/4 " NPTF (f)	150	10.3
For details on the air motor, refer to Service Guide SER 338066-A1				

#### Pump Tube

Material Outlet	Max. Material Pressure		Delivery/Minute (Approximate)*		Displacement per Cycle	
	psi	Bars	Pounds	Kilograms	In <sup>3</sup>	Cm <sup>3</sup>
3/8 " NPTF	7500	517	3	1.4	0.39	6.39
* For detailed information, refer to Service Guide SER 9611/9650						

**Table 1** High-Pressure Portable Pump Specifications



Pump Model	Two-Wheel Hand Truck	Model Weight		Width x Height (including container)	
		lbs	kg	Inches	Cm
9611-H	Not Included	21	9.5	12 x 29.5	30.5 x 75
9611-Z	Included	34	15.5	14-1/2 x 38	36.8 x 96.5

**Figure 1** High-Pressure Portable Pump Models 9611-H and 9611-Z - Model 9611-Z Shown

Alemite Corporation  
PO Box 473515, Charlotte, North Carolina 28247-3515

Copyright © 1997 by Alemite Corporation

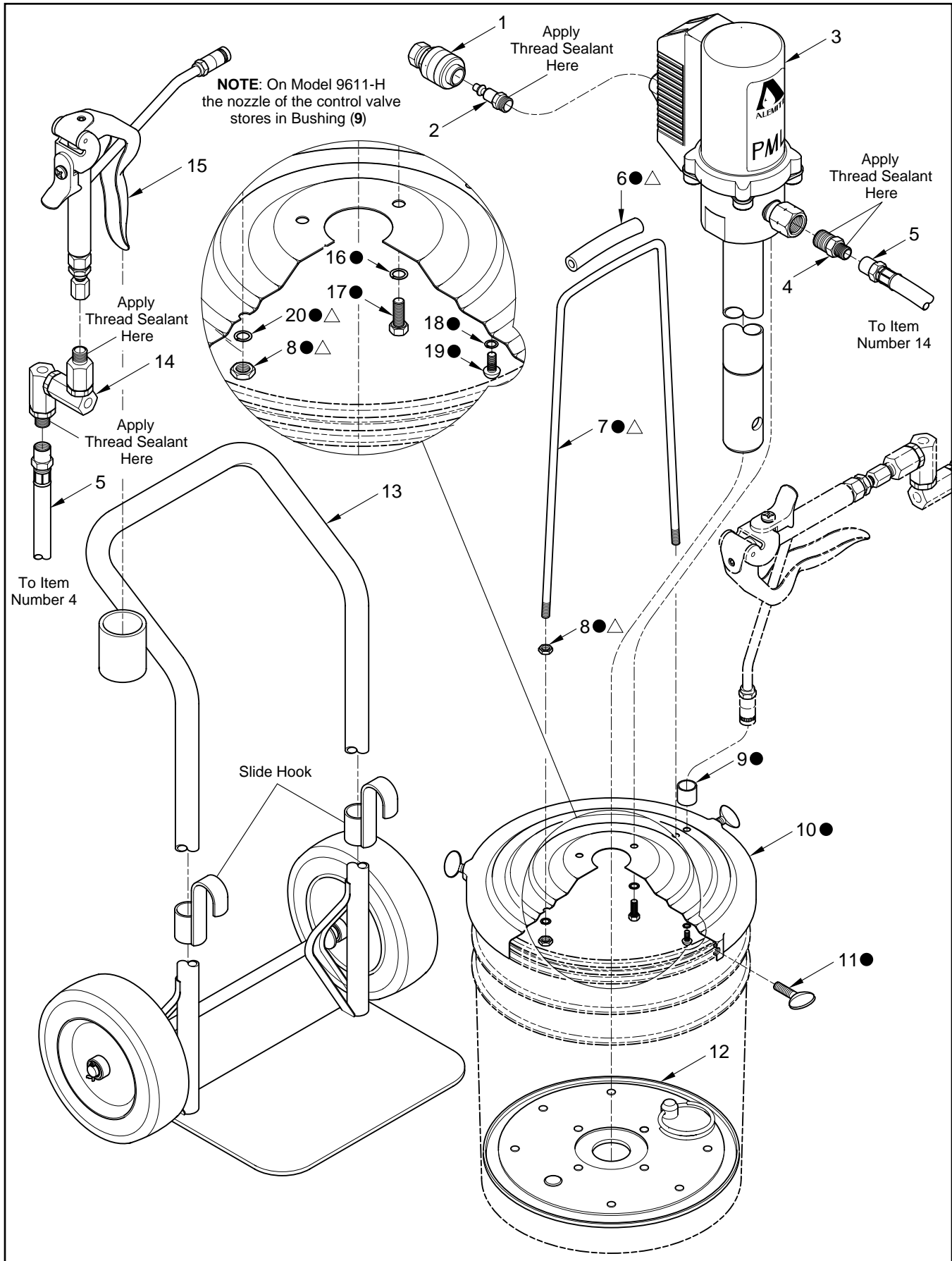


Figure 2 High-Pressure Portable Pump Models 9611-H and 9611-Z - Exploded View

Item No.	Part No.	Description	Qty	Notes	Numeric Order Part # (Item #)
1	328030	Coupler, Air, 1/4 " NPTF (f)	1		6320-3 (15)
2	328034	Connector, 1/4 " NPTF (m)	1		9611 (3)
3	9611	Pump Assembly, High-Pressure	1	See SER <b>9611/9650</b>	18223 (11)
4	44734	Adapter, 1/2 " -27 x 3/8 " NPTF (m)	1		44734 (4)
5	317875-7	Hose Assembly, Material	1		B52752 (14)
6		Grip (Rubber)	1	● △	77009 (18)
7		Handle	1	● △	77786 (17)
8		Nut, 5/16 " -18	4	● △	79029 (8)
9	315943	Bushing	1	●	170561 (19)
10		Cover Assembly	1	●	172207-1 (16)
11	18223	Screw, Thumb, 1/4 " -20	3	●	172207-2 (20)
12	337665	Plate Assembly, Follower	1		315943 (9)
13	338958	Truck, Hand, Two-Wheel	1	Model 9611-Z Only	317875-7 (5)
14	B52752	Z-Swivel Assembly, High-Pressure	1	See <b>Figure 3</b>	321678 (6)
15	6320-3	Valve Assembly, High-Pressure Control	1	See SER <b>6320-3</b>	321696 (7)
16	172207-1	Washer, Lock, 1/4 "	3	●	328030 (1)
17	77786	Capscrew, 1/4 " -20 x 1/2 "	3	●	328034 (2)
18		Washer, Internal Tooth Lock, 1/4 "	1	●	337665 (12)
19		Screw, 1/4 " -20 x 5/16 "	1	●	338141 (10)
20		Washer, Lock, 5/16 "	2	● △	338958 (13)

**Legend:**Part numbers left blank (or in *italics*) are not available separately

● △ designates a repair kit item

**Repair Kit**

Part No.	Kit Symbol	Description
<b>338166</b>	●	Kit, Cover
<b>393607</b>	△	Kit, Handle

**Assembly**

**NOTE:** Refer to **Figure 2** for component identification on all assembly procedures.

**CAUTION**

**Select a clean environment for all assembly procedures. Prevent contamination from foreign material. Damage to components can occur.**

**Pump Assembly**

**IMPORTANT:** Make sure to remove the protective cover from the inlet of Pump Assembly (3).

1. Install Pump Assembly (3) into Cover (10).
2. Secure the Pump Assembly to the Cover with Lock Washers (16) and Capscrews (17).
  - Tighten the Capscrews securely.

*IMPORTANT: Do not apply thread sealant to the first two (2) threads of any connection. Contamination can occur.*

3. Screw Connector (2) [with thread sealant] into the inlet of the air motor.
  - Tighten the Connector securely.
4. Attach Air Coupler (1) to the Connector.

**Cover Assembly and Follower**

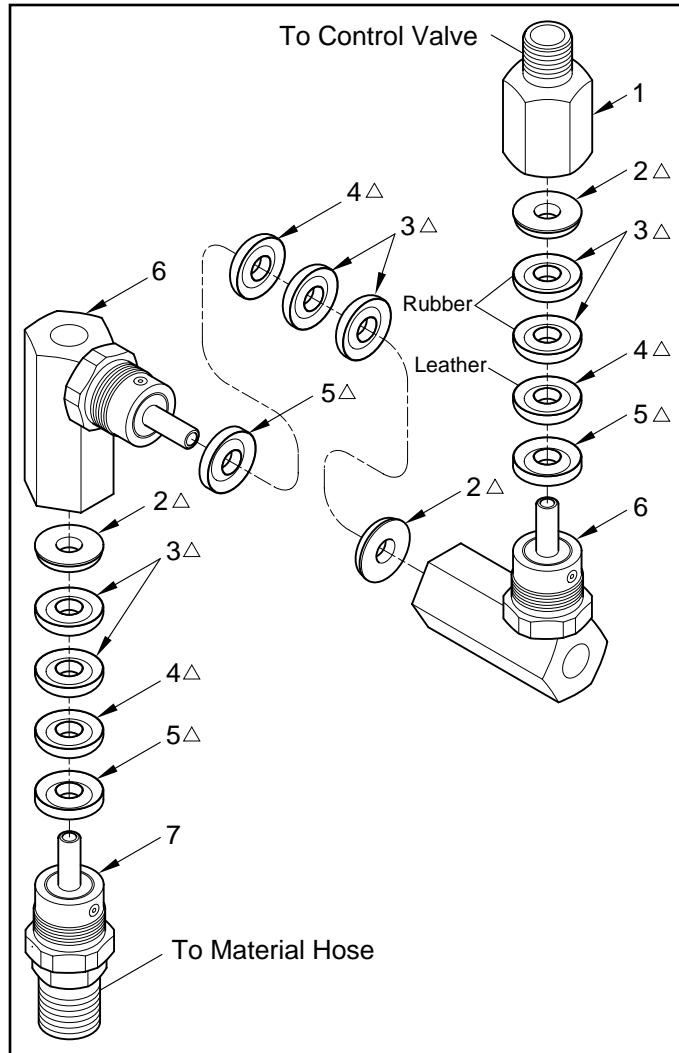
5. Install Grip (6) onto Handle (7).
6. Screw Nut (8) onto each end of the Handle.
7. Install the ends of the Handle into Cover (10).
8. Install Lock Washer (20) and additional Nut (8) onto each end of the Handle.
  - Tighten the Nuts securely.
9. Place Follower Plate (12) onto the top of the product.
  - With a wobbling motion, eliminate any air that may be trapped underneath the Follower Plate. Force the product through the hole in the center of the Plate.

**NOTE:** On model 9611-Z, place the container on Hand Truck (13). Slide each hook onto the lip of the container.

10. Guide the pump tube into the Follower Plate and fit the Cover onto the container.
11. Secure the Cover to the container with Thumb Screws (11).

**Control Valve and Material Hose**

12. Screw the large diameter end of Adapter (4) [with thread sealant] into the outlet of the Pump Assembly.
  - Tighten securely.
13. Screw either end of Material Hose (5) into the Adapter.
  - Tighten securely.
14. Screw the 1/2 " -27 end of Z-Swivel (14) [with thread sealant] into the Material Hose.
  - See **Figure 3**.
  - Tighten securely.
15. Screw the opposite end of the Z-Swivel [with thread sealant] into Control Valve (15).
  - Tighten securely.
16. Test/Prime the Pump assembly.
  - Refer to Service Guide SER 9611/9650 for details.



Item No.	Part No.	Description	Notes	Qty
1		Adapter, Swivel, 1/4 " NPTF (m)		1
2		Ring, Support, Male	Δ	3
3		V-Packing (Rubber)	Δ	6
4		V-Packing (Leather)	Δ	3
5		Ring, Support, Female	Δ	3
6		Body and Stud Assembly		2
7		Adapter, Swivel, 1/2 " -27		1
<b>Legend:</b>				
Part numbers left blank are not available separately				
Δ designates a repair kit item				

**Repair Kit**

Part No.	Kit Symbol	Description
398719-1	Δ	Kit, Repair [Quantity for two (2) Z-Swivels]

**Figure 3** High-Pressure Z-Swivel - Exploded View

**Changes Since Last Printing**  
Initial Release