



Service Guide

9611-HA
9611-HB
9611-HC

High-Pressure Portable Pump

Description

The major components of the high-pressure portable pump assembly in the 9611 model series consist of a(n):

- air-operated motor
- single-acting reciprocating pump tube with bung adapter
- control valve assembly, z-swivel, and delivery hose
- cover with bung fitting
- follower plate

Pump Assembly

The high-pressure (50:1 ratio) pump included with the assembly is designed to deliver a range of greases [up to NLGI # 3] and operate directly from their original containers.

All models are designed to be utilized with model 338958 two-wheel hand truck (not included).

Models 9611-HA, 9611-HB and 9611-HC

Each pump model includes a pump assembly with a length to accommodate different size containers. See **Figure 1**.

Specifications

Air Motor

Piston Diameter x Stroke		Air Inlet	Maximum Air Pressure	
Inches	Centimeters		psi	Bars
2-15/16 x 3	7.5 x 7.6	1/4 " NPTF (f)	150	10.3
For details on the air motor, refer to Service Guide SER 338066-A1				

Pump Tube

Material Outlet	Max. Material Pressure		Delivery/Minute (Approximate)*		Displacement per Cycle	
	psi	Bars	Pounds	Kilograms	In ³	Cm ³
3/8 " NPTF	7500	517	3	1.4	0.39	6.39
* For detailed information, refer to Service Guide SER 9611/9650						

Table 1 High-Pressure Portable Pump Specifications

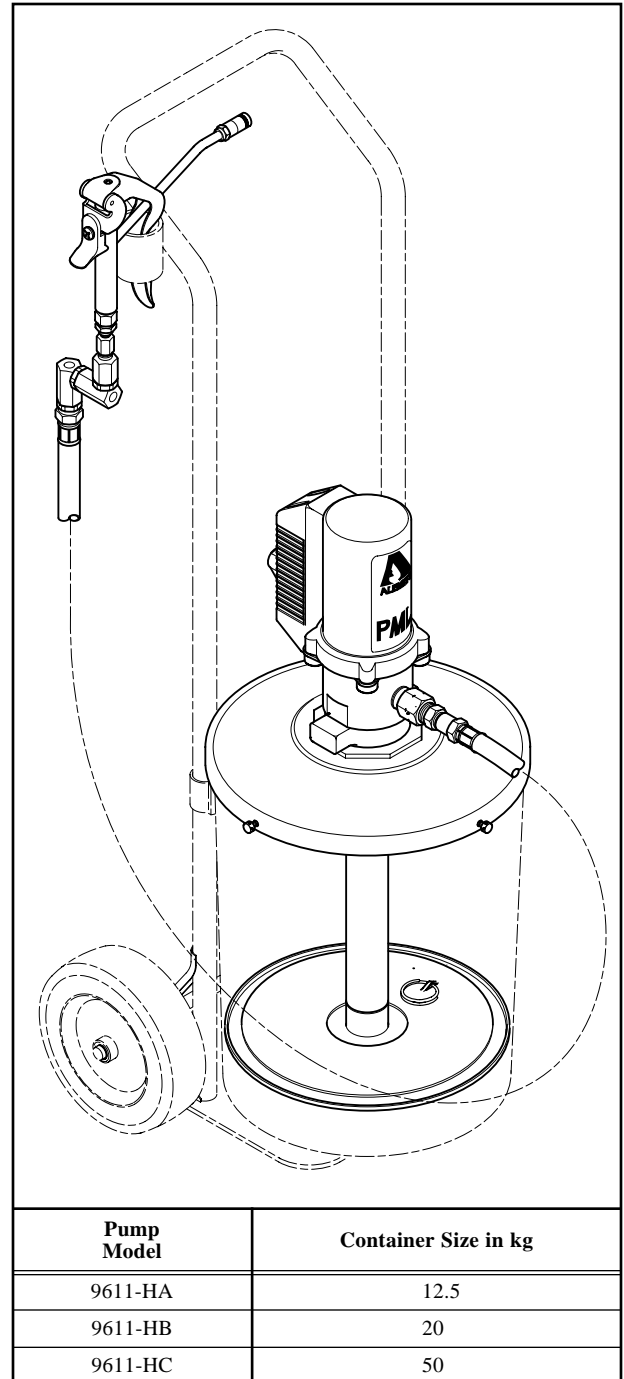


Figure 1 High-Pressure Portable Pump Model 9611-H Series

Alemite Corporation
PO Box 473515, Charlotte, North Carolina 28247-3515
www.alemite.com

Copyright © 1998 by Alemite Corporation

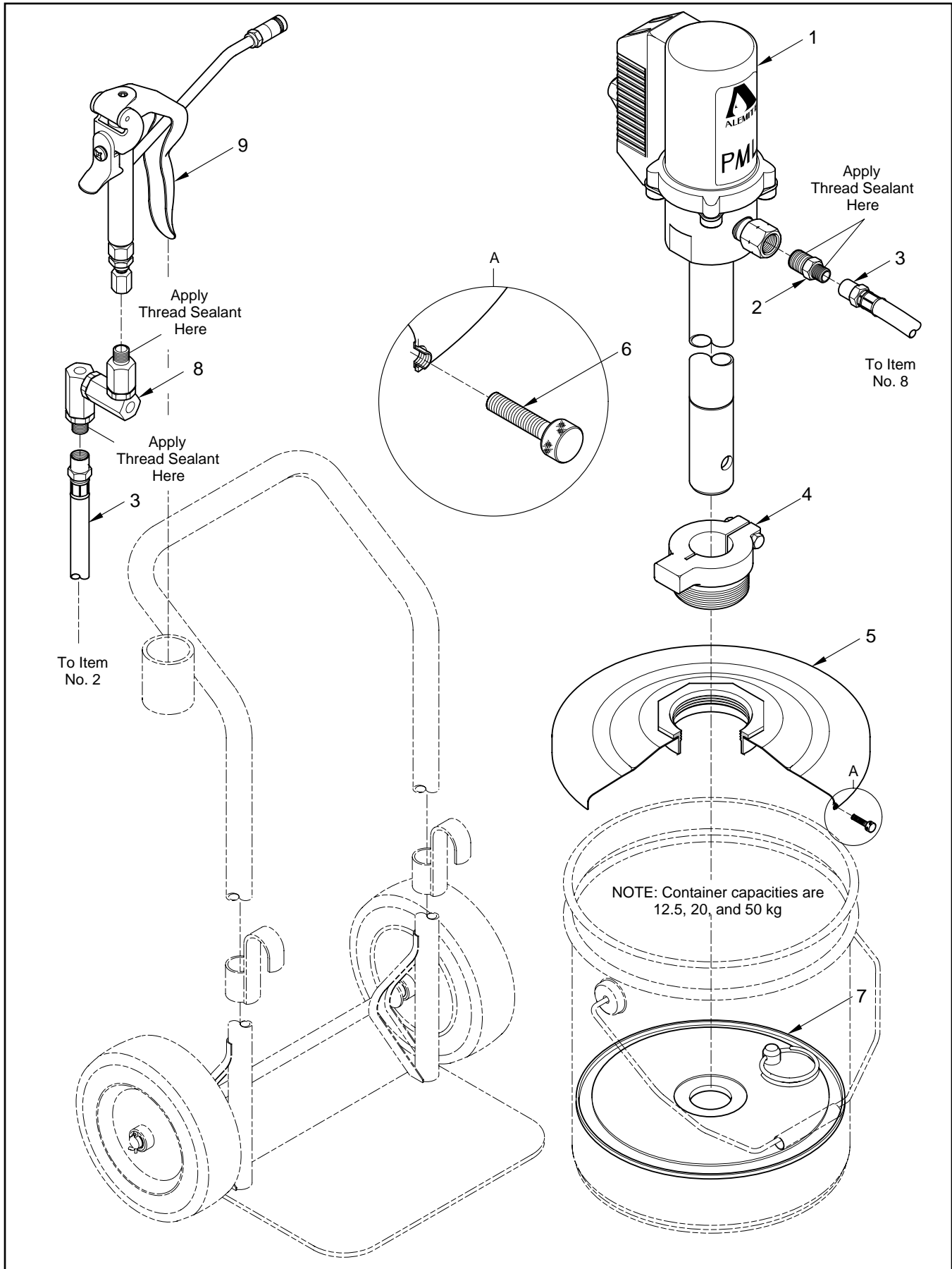


Figure 2 High-Pressure Portable Pump Models 9611-H Series - Exploded View

Item No.	Part No.	Description	Qty		Numeric Order Part # (Item #)
1	9650	Pump Assembly <i>Model 9611-HC</i>	1	See SER 9611/9650	6320-3 (9)
	9650-B	Pump Assembly <i>Model 9611-HA</i>	1		9650 (1)
	9650-C	Pump Assembly <i>Model 9611-HB</i>	1		9650-B (1)
2	44734	Adapter, 1/2 " -27 x 3/8 " NPTF (m)	1		9650-C (1)
3	317875-7	Hose Assembly, Material	1		44734 (2)
4	326750-F1	Adapter, Bung, 2 " NPTF (m)	1		48018 (6)
5	338981	Cover Assembly (for 12.5 kg container)	1	Model 9611-HA	B52752 (8)
	338982	Cover Assembly (for 20 kg container)	1	Model 9611-HB	317875-7 (3)
	338983	Cover Assembly (for 50 kg container)	1	Model 9611-HC	326750-F1 (4)
6	48018	Screw, Thumb, 1/4 " -20	3	Included w/ item 5	338981 (5)
7	338991	Plate Assembly, Follower (12.5 kg)	1	Model 9611-HA	338982 (5)
	338992	Plate Assembly, Follower (20 kg)	1	Model 9611-HB	338983 (5)
	338993	Plate Assembly, Follower (50 kg)	1	Model 9611-HC	338991 (7)
8	B52752	Z-Swivel Assembly, High-Pressure	1	See Figure 3	338992 (7)
9	6320-3	Valve Assembly, High-Pressure Control	1	See SER 6320-3	338993 (7)

Assembly

NOTE: Refer to **Figure 2** for component identification on all assembly procedures.

CAUTION

Select a clean environment for all assembly procedures. Prevent contamination from foreign material. Damage to components can occur.

Pump, Follower Plate, and Cover

IMPORTANT: Make sure to remove the protective cover from the inlet of Pump Assembly (1).

1. Screw Bung Adapter (4) into Cover (5).
2. Place Follower Plate (7) onto the top of the grease.
 - With a wobbling motion, eliminate any air that may be trapped underneath the Follower Plate. Force the product through the hole in the center of the Plate.
3. Secure the Cover to the container with Thumb Screws (6).

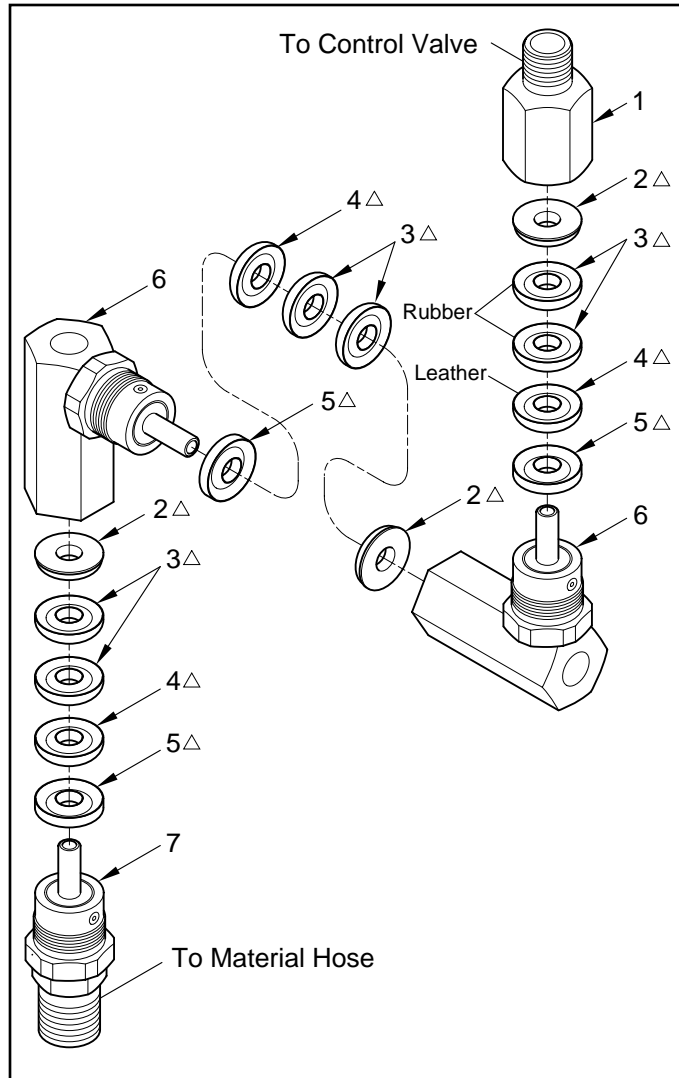
4. Guide the pump tube into the Bung Adapter and the Follower Plate.
 - Allow the Pump to descend to the bottom of the container.
5. Adjust the Pump upward approximately 1/4 " (7 mm) from the bottom of the container.
6. Tighten the screw on the Bung Adapter securely.
7. Tighten the Bung Adapter and Pump Assembly into the Cover.

Control Valve and Material Hose

IMPORTANT: Do not apply thread sealant to the first two (2) threads of any connection. Contamination can occur.

8. Screw the large diameter end of Adapter (2) [with thread sealant] into the outlet of the Pump Assembly.
 - Tighten securely.
9. Screw either end of Material Hose (3) into the Adapter.
 - Tighten securely.

10. Screw the 1/2 " -27 end of Z-Swivel (8) [with thread sealant] into the Material Hose.
 - See **Figure 3**.
 - Tighten securely.
11. Screw the opposite end of the Z-Swivel [with thread sealant] into Control Valve (9).
 - Tighten securely.
12. Test/Prime the Pump assembly.
 - Refer to Service Guide SER 9611/9650 for details.



Item No.	Part No.	Description	Notes	Qty
1		Adapter, Swivel, 1/4 " NPTF (m)		1
2		Ring, Support, Male	Δ	3
3		V-Packing (Rubber)	Δ	6
4		V-Packing (Leather)	Δ	3
5		Ring, Support, Female	Δ	3
6		Body and Stud Assembly		2
7		Adapter, Swivel, 1/2 " -27		1

Legend:
 Part numbers left blank are not available separately
 Δ designates a repair kit item

Repair Kit

Part No.	Kit Symbol	Description
398719-1	Δ	Kit, Repair [Quantity for two (2) Z-Swivels]

Changes Since Last Printing
 Initial Release

Figure 3 High-Pressure Z-Swivel - Exploded View